

SONY®



IJW1

Osebni zvočni sistem

BLUETOOTH® Kratka navodila za uporabo

SL



ICF-CS20BT/XDR-DS21BT



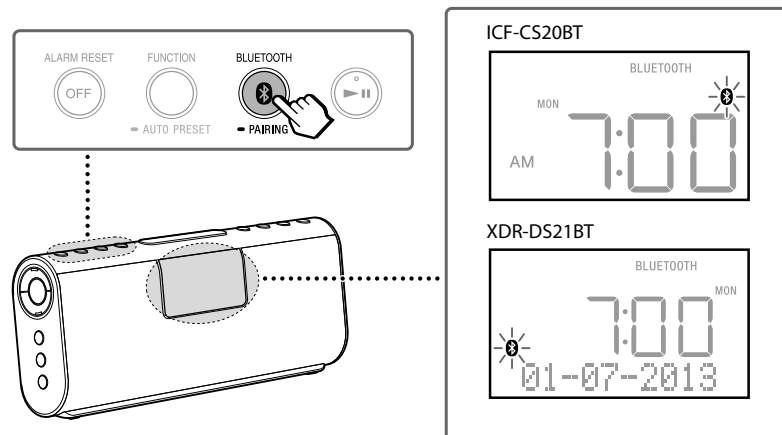
* 4 4 6 8 4 0 9 1 1 * (1)


4-468-409-11(1)

©2013 Sony Corporation

V namene prikaza delovanja je uporabljen model ICF-CS20BT.

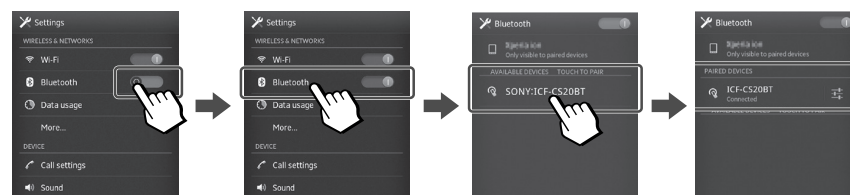
1




Pritisnite in držite, dokler ne zaslišite piskov in ne začne utripati simbol »« (BLUETOOTH)«.

2

Android

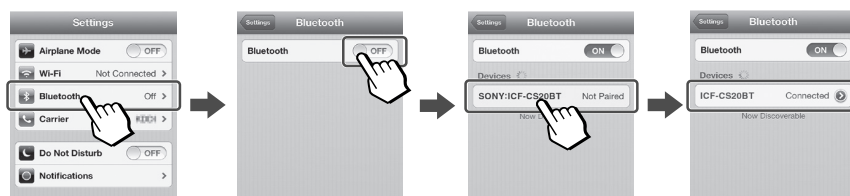


Pritisnite [Settings]
→ [Bluetooth 





[Bluetooth]

[SONY: ICF-CS20BT] ali
[SONY: XDR-DS21BT]

iPhone



Pritisnite [Settings]
→ [Bluetooth]

 OFF →  ON
 ON →  ON

[SONY: ICF-CS20BT] ali
[SONY: XDR-DS21BT]

3

